

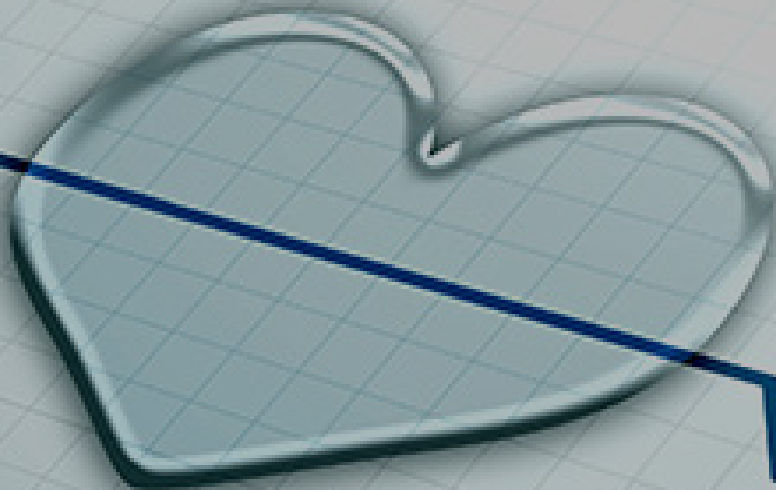
2017 Annual Report



COMMUNITY MEDICAL CLINIC

Outreach. Access. Medical Home.

cmcofkc.org



LEAD FROM WITHIN
LEAD TOGETHER
LEAD FOR OUTCOMES
LEAD FOR EQUITY
LEAD FOR SUSTAINABILITY

HOW CMC TURNS DOLLARS INTO HOPE

One of the most common responses we get during conversations about our clinic is **“I didn’t know you did so much.”** That’s because the Community Medical Clinic of Kershaw County (CMC) is more than just a free clinic.

Our mission is two-fold. We provide direct medical services at no cost to our patients. We are also currently leading the charge – with county and state partners – to make Kershaw County the healthiest county in South Carolina.

This report not only showcases CMC’s efforts to impact population health in our community, but also emphasizes the critical healthcare needs our county faces.

Our patients come to us with complex medical issues – in addition to the need for assistance in many aspects of daily living, including nutrition, literacy, transportation, and housing. Only when these factors are addressed can they pursue the steps toward healthy living.

And what’s a more meaningful gift than providing access to needed healthcare?

To our patients, like Ms. Rhonda Peebles, it’s **Hope**. Hope that soon, she won’t be sick and in pain any more.

The model of healthcare we have refined over the past nineteen years is a promising practice for the rest of our county and our state.

A key message in this annual report is numbers are important, AND outcomes are even more important. Accountability matters. Graduation rates matter. Proximity matters. Zip code matters. Personalized and integrative medicine matters.

Providing Hope matters.

I invite you to read the information in this report and think about what role you will play in the future of health in Kershaw County.

Hopeful,



Susan Witkowski

CEO

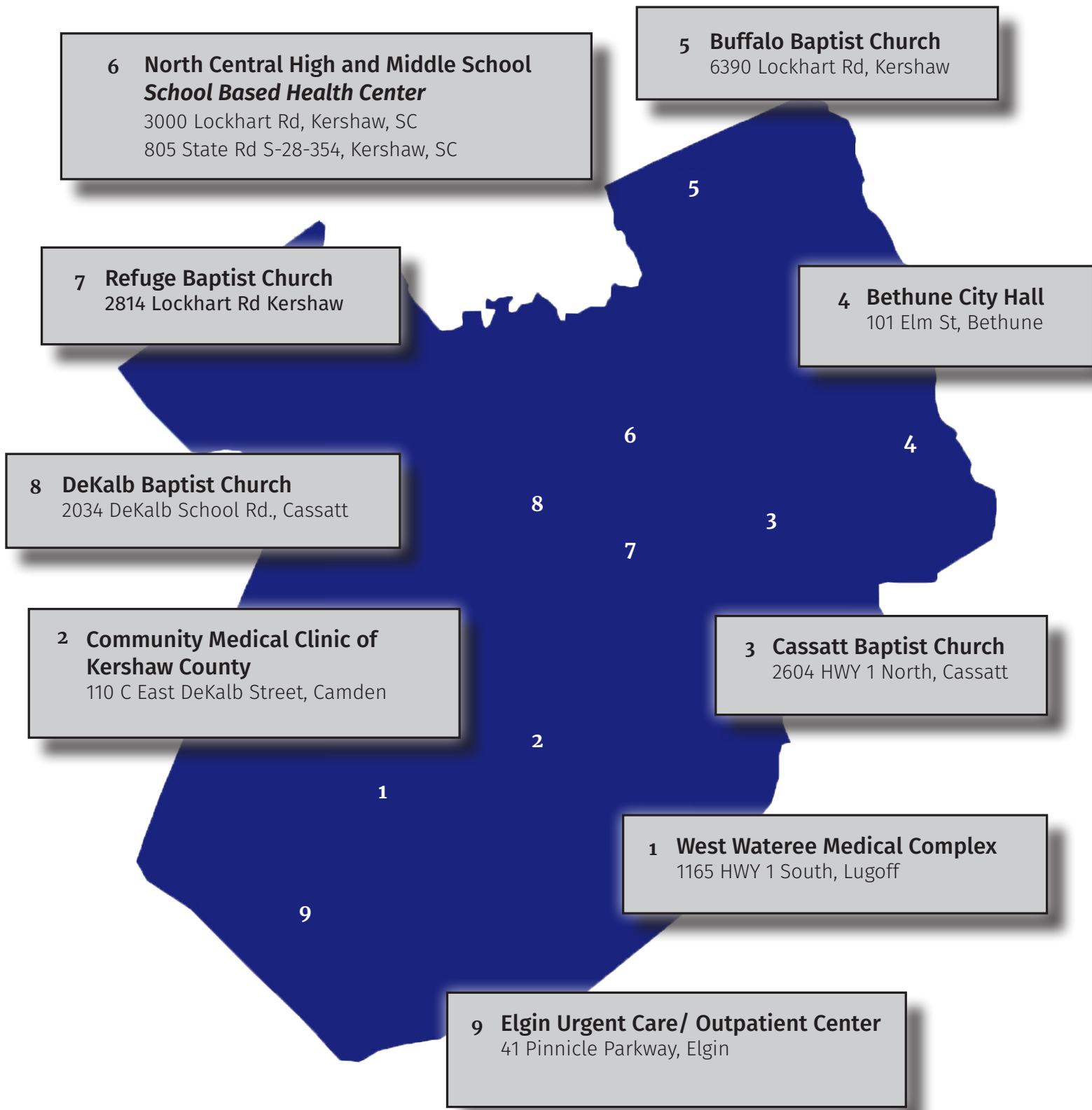
Community Medical Clinic of
Kershaw County



Contents

CMC Footprint	4
How We Make a Difference	5
Lead Together	6
Lead From Within	8
Our People = Passion	10
Lead for Sustainability	12
Lead for Outcomes	14
Lead for Equity	16
Our Approach	18
Patient Testimonials	19
How We're Making a Global Impact	20
Community Events and Outreach	22
Financial Report	25
Our 2017 Corporate Partners	26

Our CMC Footprint



OUTREACH. ACCESS. MEDICAL HOME.

How We Make a Difference

The Community Medical Clinic of Kershaw County is a family practice medical clinic with a big mission. Our main service is to provide healthcare to uninsured residents of Kershaw County. We are also currently leading the charge to improve population health in Kershaw County. Our goal is to make Kershaw County the healthiest county in the state... and we can't do that alone. Our mission is only possible through our partnerships with our volunteers, local organizations, donors and our providers.

Primary Care

In addition to our nurse practitioners, CMC also offers chiropractic services, counseling, diabetes education, physical therapy, and breast cancer and cervical cancer screenings. We can also make referrals to providers who partner with us. These specialties include surgery, urology, nephrology, pulmonology, dermatology, breast specialist, gastroenterology, endocrinology, cardiac surgery, pathology, radiology and emergency dental care.



Access Health

AccessKershaw is funded through a Duke Endowment Initiative typically awarded only to hospitals. CMC is honored to be a trusted steward of this program. AccessKershaw connect people in need of medical, dental, vision and mental healthcare with local providers and resources. More than 7,000 people have received the care they needed thanks to this program.



SBHC

We're one of only three free clinics operating a School Based Health Center in the United States. The SBHC functions like a minute clinic in North Central High School, making medical care available to 859 students throughout the school year. Superintendent Frank Morgan attributes higher graduation rates and less absenteeism to CMC's efforts in the school.



Transitional Care

Our transitional care program has reduced the number of uninsured patients being readmitted to KershawHealth. There has been a 25% decrease in ER visits for non-emergency purposes that can be directly attributed to the work of CMC. One ER visit for a patient without insurance usually costs more than \$1600. A hospital admission can be upwards of \$28,000. It's important for us to provide preventative care for those who don't have access to medical care.

Collaboration

Healthy People Health Carolinas

This is an initiative led by the Duke Endowment to fund CMC's Livewell Kershaw Coalition. Leveraging resources received from Healthy People, Healthy Carolinas, the Coalition was able to collaborate with communities that are championing health improvement work across the nation. LiveWell Kershaw Coalition members have traveled to Philadelphia, Pennsylvania and Seattle, Washington to receive training in Advanced Systems of Equity and Continuous Quality Improvement.



Kershaw County Council's Vision 2030

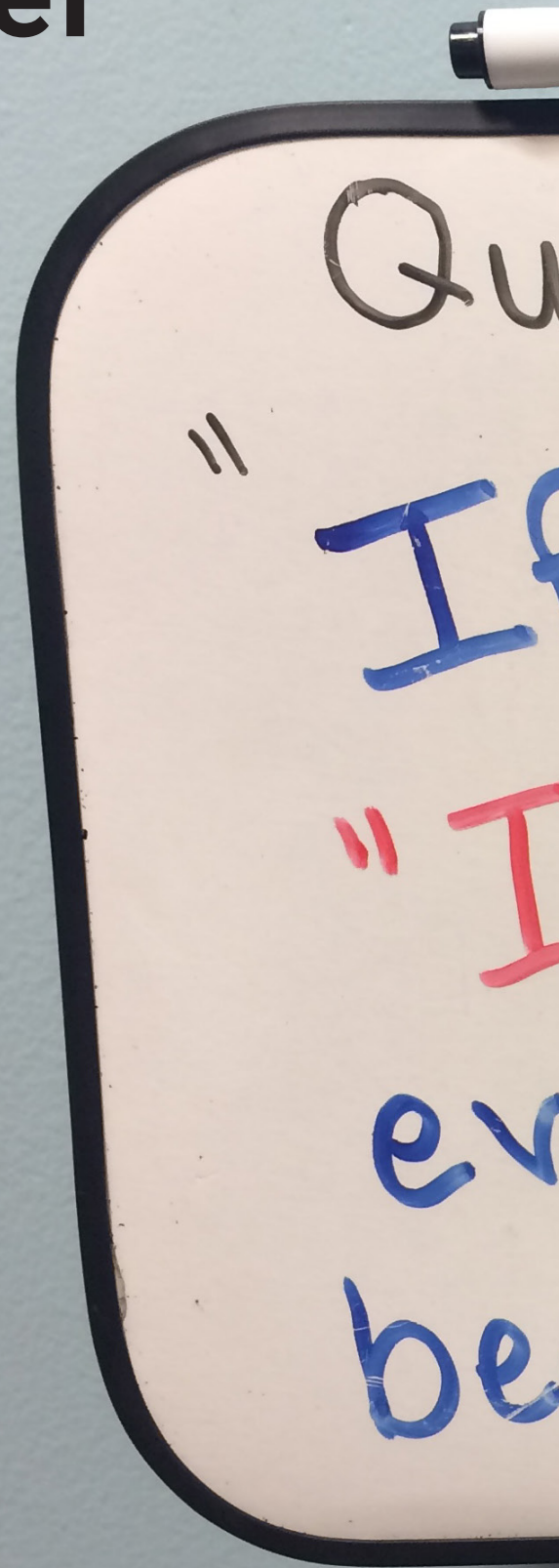
Vision 2030 is community-wide, input-based Vision document to complement and inform the Comprehensive Planning process, looking forward to the year 2030. It was developed in 2016 by a core team, including CMC's CEO Susan Witkowski. This collaboration lead to Population Health being at the forefront of the County's vision plan.

Lead Together

Because CMC's mission is only possible through our partnerships we understand the importance of collaboration. CMC leads the charge in improving population health in Kershaw County by bringing individuals, churches, businesses and other community organizations *together* to make a difference.

“Why does KershawHealth support CMC? Well, the obvious answer is to help people get the care they need in the most appropriate way. But the thing that impresses me the most about CMC is the value. Whether it’s dollars donated or in-kind contribution for the diagnostics they provide, you don’t get a better value for what you spend, period. They are able to take dollars and not only stretch them, but multiply them to the benefit of our community. I think supporting the Clinic is one of the wisest investments you can make for the return. And the true return is with the patients and the families this clinic is able to help.”

Terry Gunn
Chief Executive Officer
KershawHealth



Quote of the Week:

If We Change

"I" to "We"

then Illness

comes Wellness."

Lead from Within

Our history is a unique story of a community coming together to improve lives, renew hope and prevent diseases. Our staff, our volunteers and our supporters all have one thing in common. They lead from *within*. These individuals have a passion for our mission and for the last two decades that shared passion has allowed the Community Medical Clinic to provide innovative healthcare to the uninsured and underserved residents of Kershaw County.

What started with one doctor, a part time director, and a lot of hard work has evolved into a healthcare organization that not only provides direct medical services, but that is also implementing innovative solutions to improve population health. For the past 19 years, CMC has been empowering Kershaw County residents to live a healthy life.

Thanks to successful partnerships, intelligent business decisions, our volunteer base and community-based financial support, CMC offers a variety of programs and specialties to help patients live a healthy life.

In the past year we emerged as:

- The only free clinic in the nation to measure outcomes with a robust database approved by an internationally

recognized process improvement organization.

- One of only three free clinics operating a school-based health center in the United States.
- The only free clinic to receive a Duke Endowment Access Health funding.
- The first free clinic in South Carolina to use an innovative team model to streamline patient care.

As we've evolved and grown, we've never waived from treating a person with both respect and dignity in regard to their individual circumstances. In our experience, it's crucial to recognize all economic factors impacting our patients' lives. This means we see the whole person, not just a list of symptoms.

It takes \$500,000 a year to provide patient care.

#01 Funding

CMC is not federally funded. All donations from individuals, churches, and corporate partnerships go directly towards CMC providing direct medical care to those in need.

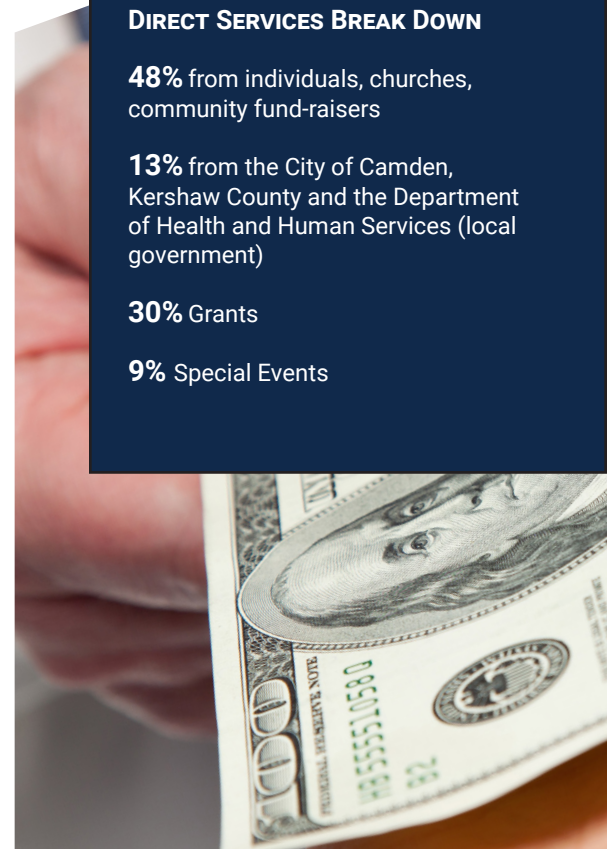
DIRECT SERVICES BREAK DOWN

48% from individuals, churches, community fund-raisers

13% from the City of Camden, Kershaw County and the Department of Health and Human Services (local government)

30% Grants

9% Special Events

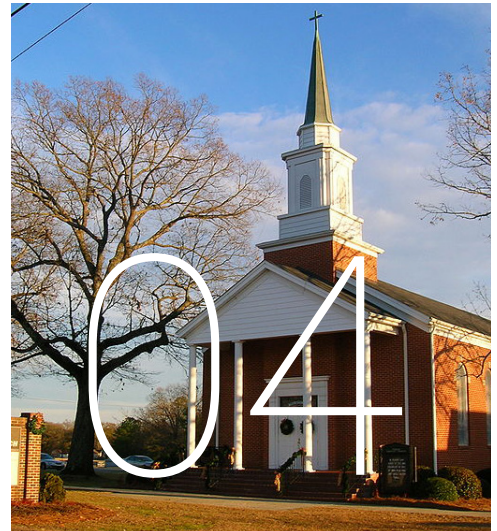


With the help of CMC, many of our patients can break the cycle of poverty. Because of complex medical and social issues, many CMC patients are reacting to their surrounding environment instead of planning for the future. Over 80% of the patients seen at the Community Medical Clinic have three or more chronic conditions, which often include diabetes, hypertension, high cholesterol and mental illness.



#02 LiveWell Kershaw Coalition

We have wrapped up the third year of LiveWell Kershaw, which focused exclusively in North Central. During this time we established satellite sites, a School Based Health Center at North Central High School and tracked all of our outcomes. As a result, we have created a blueprint for replicating our success in North Central in other parts of the county. Recently, we have secured additional resources to expand our focus to include the rest of the county. The LiveWell Kershaw Coalition has 30 different organizations actively collaborating to make Kershaw County healthier.



#03 KershawHealth

Our partnership with KershawHealth is vital to being able to fulfill our mission. KershawHealth not only contributes to CMC financially, but they also handle all of our diagnostic services and help us to connect with any KershawHealth patient who does not have health insurance. Our transitional care program has reduced the number of uninsured patients being readmitted to KershawHealth. There has been a 25% decrease in ER visits for non-emergency purposes that can be directly attributed to the work of CMC. One ER visit for a patient without insurance usually costs more than \$1600. A hospital admission can be upwards of \$28,000.



#04 Churches

CMC offers a medical mission right here in Kershaw County. We have been blessed to partner with local churches to provide access to quality medical care to our friends and neighbors.

We have satellites in four churches, Refuge Baptist Church, DeKalb Baptist Church, Buffalo Baptist Church, and Cassatt Baptist Church.

We also have a corporate partnership with Friendship Baptist Church in Lugoff.

Our People = Passion

All of the team members at CMC have a vested interest in making Kershaw County the healthiest community in South Carolina. Collectively, they have a significant amount of expertise in clinical care, social determinants, and also the community that they serve.

CMC Staff

Susan Witkowski
CEO

Susan Didato
Development Director

Mary Hill
Business Manager

Kathryn Johnson
LiveWell Kershaw Coalition Director

Geraldine Carter
Pharmacy Manager

Mary Lee Addis, FNP-BC
Nurse Practitioner

Beckie Thomkins
Community Care Coordination
Team Manager

Sheri Baytes, RN
Community Care Coordinator

Debbie Davis, RN
Community Care Coordinator

Christie Derrick
Counselor

Mariana Martinez, CNA (Bilingual)
Nursing Assistant

Jodi Rodgers
Community Health Worker

Rachael Sladek
Community Health Worker

Jessica Wilkes, DNP
Nurse Practitioner

Susan Grumbach, FNP
Nurse Practitioner

Carol Baker
Medical Assistant

Yolanda Roary
Community Navigator

2017 CMC Board

Tim Hudson, Chair
Joseph Bruce, Vice-Chair
Roy Fakoury, Treasurer
William Cox, Secretary
Mike Bunch
Cathy Forrester
Lara Hewitt

Shelley Janssen, MD
Torill Nelson
Robbie Powers
Evan Smith
Jerry Stokes
Joe Sullivan

**SYMPATHY LEADS TO CHARITY AND
EMPATHY LEADS TO CHANGE**

Volunteers

SHIRLBEE ACKWOOD	DR. STERLING CONNELL	FRANCES GUY	META MARKLEY	KATIE POPE
LARRY ACKWOOD	BILL COOMBS	ALLISON HILL	PEGGY MAYS	MARY REAMES
CILLA ANSLEY	WILLIAM COX	LAURA HILL	DEB McABEE	SARAH REED
TONYA ARTINIAN	JOANNA CRAIG	BUDDY HILL	CAROL McCHESNEY	AL REED
CINDY BABCOCK	EMILY CULLER	MARY HILL	ANNE MELANSON	NANCY ROMANIELLO
KITTY BEARD	JOHNNY DEAL	JEAN HOLLAND	ROSEMARY MURPHY	PATTY ROSE
KATHY BECKHAM	SUSAN DIDATO	RAY HOPKINS	CHRISTY NAPPER	MABLE ROSEBOROUGH
ANNE BELL	KATHLEEN DORAN	RUBY HORNSBY	TORILL NELSON	JOY SCULLY
BRIGITTE BERG	MARY DURAI	KIM HUDSON	MOLLY NETTLES	JOAN ELLA SHEORN
JILL BETTENDORF	MARY CLAIRE ESTES	KATHLEEN HUGHES	JILL OBLAK	HANNAH SPEAR
SHARON BLAKENEY	ROY FAKOURY	MORGAN HUMPHRIES	KIM O'DONNELL	LYNELLE STEELE
SHEILA BRACEY	SUSAN FIELD	ALLISON HYMAN	KATHERINE OGBURN	ISABEL STRICKLAND
STACY BRANHAM	RICHARD (DICK) FOOTE	DR. SHELLEY JANSSEN	SARAH OLIVER	STEVE VAN HORN
GRETCHEN BROWN	PEARL FOOTE	TJ JAY	ROLF PEDERSEN	LAVESHIA WALL
DR. KEN CARSON	TERRI GEDDINGS	THEANELL LANE	ASTRID PEDERSEN	EVA WARD
MARY CLARK	SANDRA GHENT	MARIA LAURICELLA	DEAS PENMAN	DIANA WENMAN
LIZ CLARKE	KASSANDRA GLOVER	LINDA LAYMAN	CORRINE PEPE	BARBARA WILLENS
CAROL CLARKE	ELLEN GORDON-CREED	WILLIAM LIGON	MARYELLEN PFOHL	LEON WILLSON
LINDA COBB	BECCA GREEN	ELAINE LOOS	JOANNE PONDISH	JIM WITKOWSKI



CREATIVE
EFFECTIVE
INNOVATIVE
COMMUNICATIVE

Lead for Sustainability

We adopted a three-year strategic plan in 2016. With one year left to accomplish our goals, here's where we wrapped up 2017. We believe the model of healthcare we have refined is a promising practice for our county and the rest of our state. Together, we will achieve a healthier Kershaw County, where individuals and communities are empowered to take charge of their own health and well-being.

Objective A : Diversify and grow revenue services to ensure sustainability of the clinic

In the last year, CMC has hired a full-time development director and launched the You Are Key annual campaign to raise both funding and awareness of CMC. CMC has also met with key legislative leaders to continue and expand the LiveWell Kershaw contract.

Objective B : Ensure effective data management systems

Data management is a key part of running any successful healthcare organization. This year we have integrated a central Electronic Medical Record management system which allows all our staff to easily access the information they need. We also adopted an innovative case management system, the Hub and Pathway database.

Objective C : Be the recognized leader in population health in Kershaw County through Community Outreach & Engagement

CMC launched a new website with all information about our organization

in one place. We also kicked off a Wellness Wednesday series of radio interviews with Kool 102.7 WPUB and began sending out a quarterly newsletter in print and electronic format. Our Care Coordination team is also active in our community by attending events and participating in local outreach initiatives.

Objective D : Provide client-centered holistic care to meet an individual's and family's needs

In March, CMC became the first free clinic in South Carolina to go live with the Hub and Pathway database. This allows the Clinic to build a sustainable model to provide high quality services to vulnerable populations. Taking a systems-level approach and redesigning a free clinic model to serve as the backbone for population health in the county has taken an enormous amount of time and resources. However, this system change will impact the delivery of healthcare for the entire county and will allow us to more efficiently track and report outcomes for medical, social, and economic determinants. We continue to evaluate and assess the healthcare gap and successfully completed an interactive gap analysis map.



“As you move forward, we need to create an environment where we talk to one another. We all learn from each other and that’s how we accelerate our good work. I’d be thrilled if Kershaw County became the healthiest county in the state. That’d be great.”

Dr. Rick Foster, MD
*Senior Advisor,
Population Health
Improvement for the SC
Hospital Association*



Objective E : Provide resources and knowledge to access needed health and social services

CMC expanded its services to have a nurse practitioner seeing patients in our Lugoff office at the West Wateree Medical Complex as well as a Community Health Worker at Elgin Urgent Care to assist patients who need care, but have no way to pay for it. This is in addition to CMC's six existing satellite offices throughout the North Central region.

Objective F : Facilitate activities to support healthy behaviors

The Community Medical Clinic has taken on a leadership role for

Kershaw County in providing the capacity to facilitate health discussions and support healthy behaviors through the LiveWell Kershaw Coalition. Over the past year, four Wellness Riders Bus Tours have taken place, educating residents on the barriers to accessing healthcare and maintaining well-being in Kershaw County. Follow-up conversations on what can be done to encourage healthy behaviors and mitigate barriers have taken place. The Coalition will begin focus groups in January 2018 with youth to gain insight on what teens feel are the primary health concerns and what a successful youth-led health intervention would look like.

Mike Conley, Kershaw County Planning and Zoning Director

I love being involved with the Community Medical Clinic because they are addressing needs that need to be addressed and they are asking and answering questions that have never been asked before here in our county,

Lead for Outcomes

CMC is leading the way to better health not only in Kershaw County, but throughout South Carolina. One key lesson we've learned is that numbers are important, AND outcomes are even more important. Accountability matters. Graduation rates matter. Proximity matters. Zip code matters. Personalized and integrative medicine matters.



\$5.7m

TOTAL VALUE IN SERVICES & MEDICATION



Raising the Bar

Based on the 2017 Community Health Needs Assessment, almost a quarter (23.4%) of all residents in Kershaw County are uninsured. This is compared to the 15.1% state average and the 12.8% national average.

"The greatest healthcare is practiced in the home and community with sustainable outcomes. The most expensive healthcare is in the hospital with the least amount of outcomes."

Pastor Richard Joyner, *Conetoe, NC*



Closing the Gap

Uninsured populations have been linked to worse health outcomes, higher mortality rates, and higher levels of chronic diseases. Despite the Affordable Care Act and state efforts to address gap issues without expanding Medicaid, roughly 14,000 residents of Kershaw County do not have health insurance.



150%

Federal Poverty Level

Federal Poverty Level (FPL) is a measure of income issued every year by the Department of Health and Human Services (HHS).



800

Number of Patients Served

Our patients come to us with complex medical issues in addition to the need for assistance in many aspects of daily living, including nutrition, literacy, transportation, and housing.

Direct Services

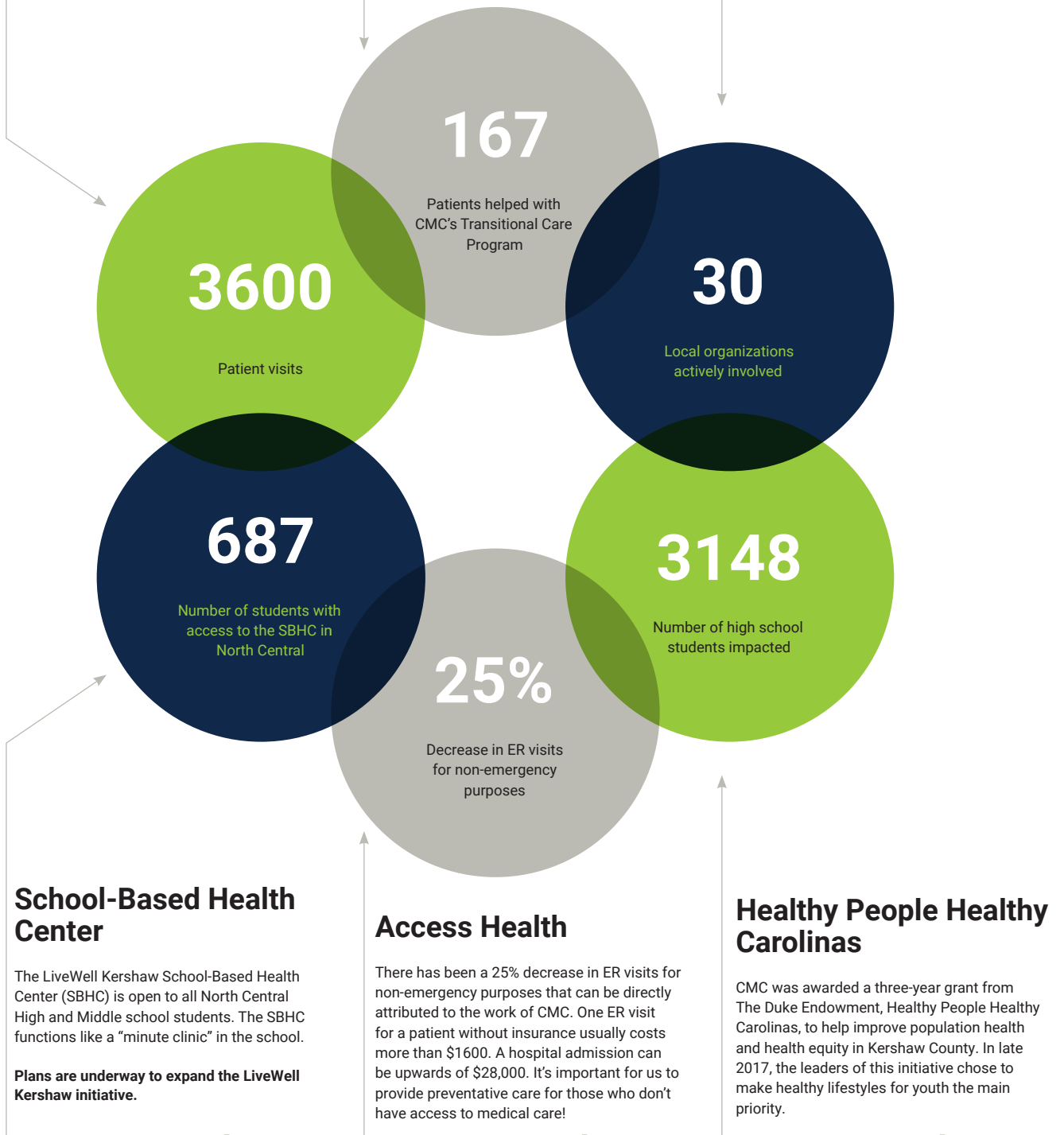
Patient referrals are available to community specialists when necessary. Services provided include chiropractic care, counseling, diabetes education, physical therapy and breast cancer and cervical cancer screening for women between the ages of 47-64.

Transitional Care

The Transitional Care Program is a collaboration between CMC and KershawHealth. CMC Registered Nurses visit KershawHealth and meet with patients who don't have insurance and also don't have primary healthcare providers. Patients can then fill out a CMC application and schedule a follow-up appointment.

LiveWell Kershaw Coalition

The LiveWell Kershaw Coalition's mission is leading together to make Kershaw the healthiest county in South Carolina. The coalition currently has 30 businesses and organizations working together collectively to achieve this goal.



School-Based Health Center

The LiveWell Kershaw School-Based Health Center (SBHC) is open to all North Central High and Middle school students. The SBHC functions like a "minute clinic" in the school.

Plans are underway to expand the LiveWell Kershaw initiative.

Access Health

There has been a 25% decrease in ER visits for non-emergency purposes that can be directly attributed to the work of CMC. One ER visit for a patient without insurance usually costs more than \$1600. A hospital admission can be upwards of \$28,000. It's important for us to provide preventative care for those who don't have access to medical care!

Healthy People Healthy Carolinas

CMC was awarded a three-year grant from The Duke Endowment, Healthy People Healthy Carolinas, to help improve population health and health equity in Kershaw County. In late 2017, the leaders of this initiative chose to make healthy lifestyles for youth the main priority.



EQUALITY

VS.



EQUITY

Our Approach

The Community Medical Clinic of Kershaw County is leading the charge to improve population health in Kershaw County using the “Upstreamist” Approach.

What is the Upstreamist Approach?
This is an analogy that describes primary prevention at the heart of population health. The story goes as follows:

Three friends are walking together in the woods when they approach a rapidly flowing river with a waterfall within sight. Upon further examination, the three friends see people being washed away and plummeting over the waterfall's edge to certain doom.

Deciding they couldn't sit back and watch, the friends took action. One friend jumped right in and swam along the edge down to the cusp of the waterfall, grabbing as many people as he could and carrying them to safety. *This friend can be referred to as a medical specialist, someone who saves their patient nearly before the clock strikes a final tone. We need these incredible people who can rescue when all other methods fail, but alas, there are other methods.*

The second friend builds a raft and paddles it out to the middle, saving as many people as he can, pulling a few up and over the side here and there, although some are still slipping past. *This friend can be referred to as your general primary care physician, seeing people at the forefront of their illness, but also not quite in the safe zone.*

The third friend has a different approach and can be seen running up the grassy bank, in which the other friends cry “Where are you going?! We need your help!”

The third friend replies “I am going upstream to see who or what is throwing these people in the water in the first place!” *Enter the Public Health Professionals or Healthcare Upstreamist.*

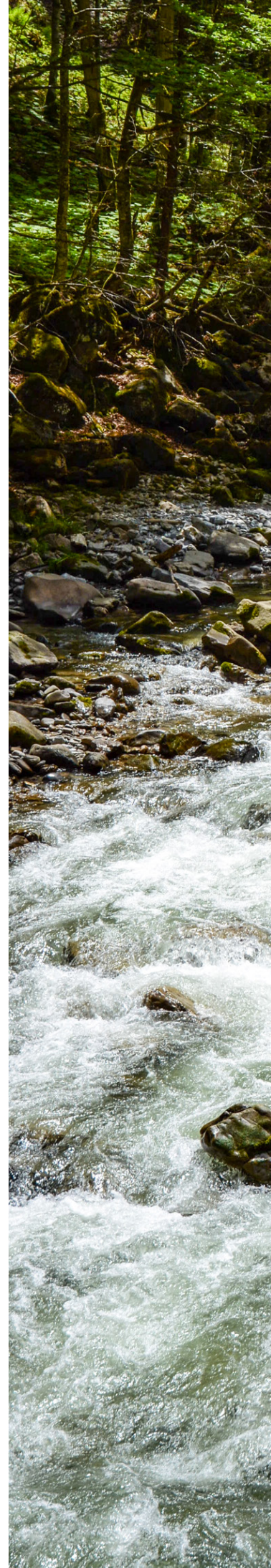
As the story implies, the Community Medical Clinic also focuses on investigation, prevention, and education to give people every chance to **not** end up in the river in the first place.

The LiveWell Kershaw Coalition received \$450,000 in grant money from the Healthy People, Healthy Carolinas, an initiative of The Duke Endowment.

The Duke Endowment has made an initial investment of \$450,000 in each community to support the coalition over the next three years. Support from The Duke Endowment will aid and enhance community efforts to improve health.

The community coalitions will also receive support to improve their capacity to implement evidence-based interventions and monitor performance.

Ultimately, the community coalitions will require additional support from others to successfully grow and sustain their work.



Rhonda Peebles
Camden

“Since I’ve been coming to the clinic I feel good so anything that’s going on with you, you’re going to get the help you need. They’ve got an answer for it and they’re going to help you through that. They love what they do and they really take care of you when you go and you don’t have to worry about nothing once you get there. I thank God for everybody here at the clinic because if it wasn’t for the clinic I don’t know where I would be or what I would do.”



Janie Duggan
Camden

“Ten years ago, I was very sick. I had problems that I could not solve because I had no insurance and no way to see a doctor. If it had not been for this clinic, I would have died. They were there for me when I was slowly putting myself under. I’m so proud of all my doctors and all my nurses and y’all will be too if you come up here when you need these people. They are good people and they will help you out.”



David Thorn
Cassatt

“When I first started coming here I had lost my job, which meant that I’d lost my insurance, and because I am a diabetic with high blood pressure and all these other ailments it was a place for me to come to get medication, exams, talk to people, because it just gave me so much. The friendliness, the warmth, the smiles, the professionalism, the caring, I mean, I just can’t say it enough, I really can’t.”



How We're Making A Global Impact

100 Million Healthier Lives is an unprecedented collaboration of change agents across sectors who are pursuing an unprecedented result, and the Community Medical Clinic is a partner in this mission.

The goal: 100 million people living healthier lives by 2020. CMC has joined this initiative and is working to include the 62,000 people living in Kershaw County.

Vision: to fundamentally transform the way the world thinks and acts to improve health, well-being, and equity to get to breakthrough results.

Together, we are systematically creating a community of solutions to the most intractable challenges that stand in the way of achieving health, wellbeing and equity across the globe.



01

Department of Health and Human Services (DHHS) Contract (2014-2017)

After identifying the northeastern portion of Kershaw County as a hotspot for chronic disease and over-utilization of the emergency room, the LiveWell Kershaw Coalition set out to change healthcare for residents in the North Central area through the assistance of a DHHS contract. In order to make an impact, the Community Medical Clinic of Kershaw County sought to meet those with the greatest need, where they are by establishing satellite sites in churches throughout the region. Those without health insurance can be seen by a Nurse Practitioner and Community Health Worker at no cost.

02

School-Based Health Center (2015)

Realizing that graduating from high school is the greatest predictor of health, LiveWell Kershaw set up a School-Based Health Center (SBHC) at North Central High School through the financial support provided by the DHHS contract. The SBHC operates as a "minute clinic" to see students for sick visits and sports physicals. The SBHC has been proven to increase seat time for students, thus increasing the likelihood of receiving a high school diploma.



03

Healthy People, Healthy Carolinas, a Duke Endowment initiative (July 2017)

The LiveWell Kershaw Coalition was selected to participate in Healthy People, Healthy Carolinas and as a result, receives \$150,000 in funding each year for three years to support population health advancement in Kershaw County. This funding has allowed the coalition grow under the leadership of a full-time director, while also broadening efforts to a county-wide approach.

04

Institute for Healthcare Improvement's SCALE 2.0 (July 2017)

Leveraging resources received from Healthy People, Healthy Carolinas, the Coalition was able to secure a spot in SCALE 2.0 (Spreading Community Accelerators through Learning and Evaluation), to collaborate with communities that are championing health improvement work across the nation. LiveWell Kershaw Coalition members have traveled to Philadelphia, Pennsylvania and Seattle, Washington to receive training in Advanced Systems of Equity and Continuous Quality Improvement. What they have learned will be translated to those involved in the Coalition's work.

05

Healthy Lifestyles for Youth (September 2017)

The LiveWell Kershaw Coalition examined data from the Community Health Needs Assessment conducted in April 2017 – funded by the Health Services District of Kershaw County – to identify the most pressing health needs for the community. "Healthy Lifestyles for Youth" was deemed the priority with specific prevention focus to diabetes, teenage sexual activity, and tobacco/vaping use among high school students ages 14-18.

06

Next Steps (2018)

LiveWell Kershaw Coalition has developed specific plans to begin conducting focus groups with youth at Camden High School, Camden Military Academy, Lugoff-Elgin High School, and North Central High School, as well as those involved in homeschool programs. The purpose of these focused conversations is to gain insight on youth perception of health behaviors and to allow for co-design of solutions to health problems that exist for youth in Kershaw County. Information gathered will inform an Evidence-Based Intervention to be implemented. Because of the clarity provided by outlined plans and potential impact to be made, the Institute or Healthcare Improvement has awarded the Coalition an additional \$50,000 for the implementation and work related to these plans in 2018.

Community Events

Connecting with the CMC family year-round is important. This is why we held several events to engage our patients, our volunteers, our partners, our donors and our staff.



Sponsorship Drop-In

CMC hosted a gathering for all corporate partners that include tours of the clinic.

Wellness Rider Tours

These tours not only showcase CMC's efforts to impact population health in Kershaw County, but they emphasize the critical healthcare needs our county faces.

Volunteer Week

During National Volunteer Week, CMC recognizes the contributions of volunteers with a luncheon and a memorial garden service.

Food for Thought

Food for Thought is a quarterly dinner meeting facilitated by CMC to address healthcare needs.

LiveWell Half-Time Show

To kick off the North Central High School football season, the entire CMC staff along with Kershaw County School District Superintendent Frank Morgan celebrated the School-Based Healthcare Center during half-time with a presentation and goodies for the crowd.

KEY Reception

The KEY Reception was all about saying thank you to our wonderful volunteers and donors who make our mission possible. We couldn't achieve our goals without their help and support. The theme of the event was "Be the key, unlock a healthier community" and Anton Gunn, healthcare consultant and former State Representative of House District 79 was the keynote speaker.

and Outreach



Community Events and Outreach

The Community Medical Clinic has two flagship fundraising events each year, the Clinic Classic and the Oysters and BBQ Bash. In addition, volunteers organize an annual Attic Sale to benefit CMC.

The 10th Annual Clinic Classic

The Clinic Classic is an event to both raise funds for CMC and promote physical activity for both youth and adults in Kershaw County. The USTAF certified course winds through Camden's Historic district. It begins and ends at the Clinic located at 110-C East DeKalb Street. The 10th Annual Clinic Classic included a 5K and a 1-mile run.

The 4th Annual Oyster and BBQ Bash

The 4th Annual Oyster and BBQ Bash brought together fun, food and fundraising at 833 Broad Street Camden. Featuring an array of delicious oysters and barbecue, this sold out event also featured live entertainment by Second Nature band.

The Attic Sale

The annual Attic Sale is currently organized by Sarah Reed, a dedicated volunteer of CMC. Volunteers collect donations throughout the year and then organize the Attic Sale to take place Thursday through Sunday in the early Spring. In 2017, volunteers also hosted one-day-only Holiday Attic Sale in December. All proceeds from these event benefits CMC.



Financial Report

The Kershaw County Community Medical Clinic Statement of Activities for the year ended December 31, 2016 and December 31, 2015.

	UNRESTRICTED	TEMPORARILY UNRESTRICTED	2016 TOTAL	2015 TOTAL
SUPPORT AND REVENUE				
Grant/contract income	\$ —	\$ 1,075,627	\$ 1,075,627	\$ 812,620
Contributions	37,337	—	37,337	212,622
Annual campaign	86,054	—	86,054	152,355
Special events	69,379	—	69,379	62,114
In-kind donations	1,660,200	—	1,660,200	1,699,066
Interest	3,087	—	3,087	226
Net assets released from restrictions	1,075,627	(1,075,627)	—	—
TOTAL SUPPORT AND REVENUE	2,931,684	—	2,931,684	2,939,003
EXPENSES				
Program services	2,810,953	—	2,810,953	2,753,635
Supporting services:				
Fundraising	79,741	—	79,741	20,983
General and administrative	21,567	—	21,567	29,235
TOTAL EXPENSES	2,912,261	—	2,912,261	2,803,853
NET CHANGE IN NET ASSETS	19,423	—	19,423	135,150
NET ASSETS, BEGINNING OF YEAR	542,198	—	542,198	407,048
NEW ASSETS, END OF YEAR	\$ 561,621	\$ —	\$ 561,621	\$ 542,198

Our Corporate Partners

KershawHealth



Your support allows us to be at the forefront of creating a healthier Kershaw County for our community now and for generations to come.

Because of your generosity, CMC – a free clinic – is able to provide quality medical care at no cost to our patients.



Connect with CMC



cmcofkc.org

PO Box 217, Camden SC 29021
803-713-0806



Hope



COMMUNITY MEDICAL CLINIC

Outreach. Access. Medical Home.

HELPING PEOPLE THRIVE, NOT JUST SURVIVE.